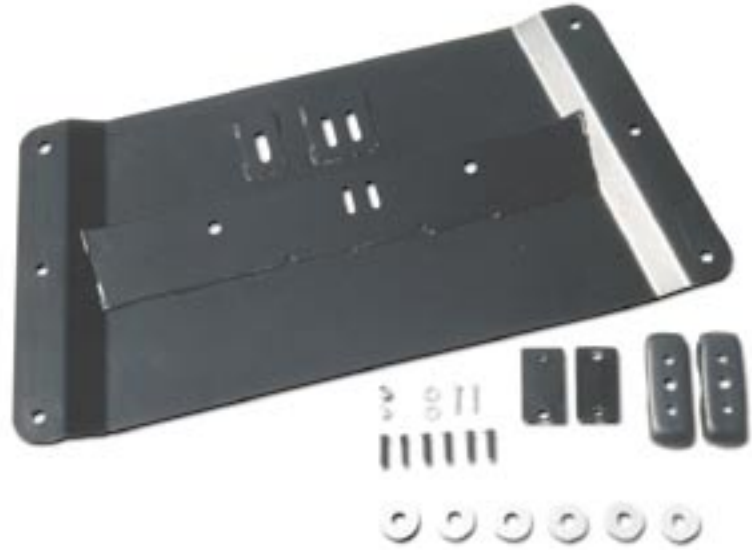




Installation Notes for TeraFlex BellyUp Skid Plate for YJs (BUY)



Think safety first when installing this kit. The installation of this kit will require use of the TeraFlex 231SS or equivalent.

Component list

Please check the components in your kit prior to beginning installation. Each kit should include:

- | | |
|-----------------------|----------------------------------|
| 1 Belly Up Skid Plate | 2 Motor Mount Spacers |
| 2 Engine Mount Nuts | 6 1/2" x 1/5" Buttonhead bolts |
| 2 1/2" lock washer | 2 3/8" washer |
| 2 Spring purches | 2 10mm x 40mm bolt |
| | 6 1/2-inch transfer case spacers |

Warning:

This product is not inclusive in and of itself.

DO NOT attempt to install this product unless you have or will have modified the following components:

- transfer case slip yoke eliminator kit with constant velocity (CV) type rear drive shaft.***
- body lift - One-inch for 2.5L engines and six-cylinder YJs with automatic transmissions. Two-inch for six-cylinder YJs with manual transmissions.***

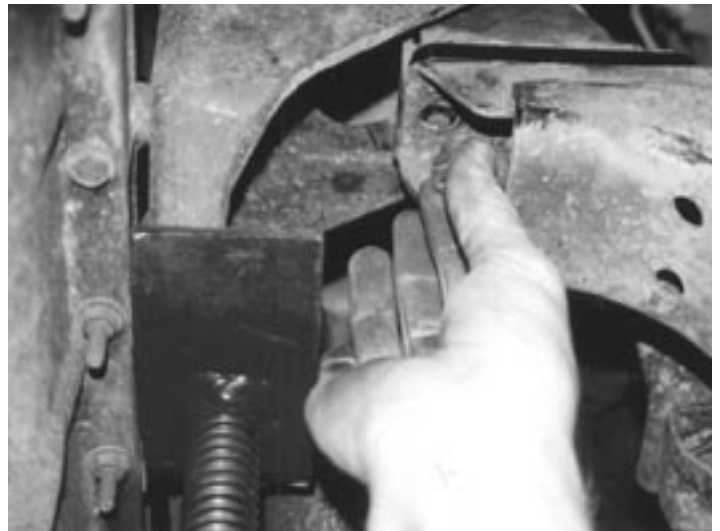
This product does and will effect drive shaft angle and may cause drive shaft vibration.

Tera Manufacturing, Inc.
5251 South Commerce Dr.
Murray, Utah 84107
Phone/801.288.2585
Fax/801.288.2571
www.teraflex.biz

Welding required:

This kit includes two longer, "anti-spring-wrap" type purchases which will require welding on the axle tube. You must remove your old purchases and replace them unless:

- you have a high pinion axle (often called a "reverse-cut" axle).
- you have already relocated the axle purch for a high lift spring kit.



Installation considerations

Exhaust alignment - Check exhaust alignment and adjust as necessary.

Driveshaft clearance - We recommend allowing at least one inch of clearance for the driveshaft.

Check driveshaft length - If a longer driveshaft is required, Tera offers one inch longer yokes for use with TeraLow driveshafts. Please contact the manufacturer of your driveshaft for longer yokes to fit your application if you don't already have one.

Shift Linkage Adjustment - Check the shifting linkage and adjust if needed.

Body Lift - Automatics and four cylinder manuals will need at least a one-inch body lift. Six cylinder manuals will require between two and three-inch body lift.

Drive shaft vibrations - If drive shaft vibrations occur, adjust axle pinion angle for proper drive shaft angles, and/or shim down the skid plate.

Spring purchases - Longer spring purchases have been provided with this kit. They will need to be positioned to correct pinion angles and welded in place.

Motor mount spacers - When installing the motor mount spacers, it will be necessary to redrill the hole to accommodate the special nut used on this kit. A 1/2-inch drill bit will be adequate, but a 9/16-inch bit would make installation easier.

