



Installation Guide for the TeraFlex Long-Arm Suspension System for TJs (STL)



This kit is designed specifically for use with TeraFlex lifts and suspensions. It can be used in combination with suspensions from other manufacturers for improved performance; however, with more than five inches of lift will compromise performance and ride quality. It replaces standard-length control arms with new, longer control arms. The upgrade will improve on-road driving comfort as well as off-road performance. Take every precaution to make this installation a safe procedure. Make safety the number one priority with any suspension or lift installation.

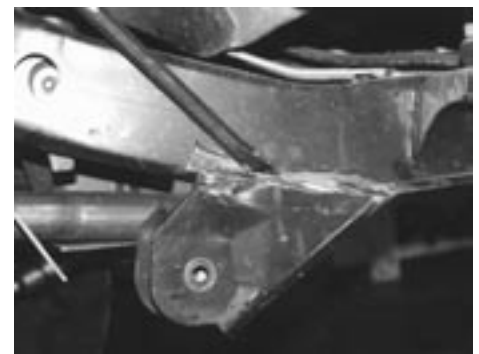
Please make sure that your kit includes the following items before starting installation:

Part	Description	Quantity
LABL	Long-arm bracket, left	1
LABR	Long-arm bracket, right	1
BOLT3/8-16x1 TYP F	3/8-16x1" SELF TAP BOLT	6
BOLT9/16-12x4"	9/16-12x4" GRD 5 HEX	2
WASHER9/16	9/16" lock washer	2
WAHSER1/2	1/2" flat washer	2
FATJLR	Lower FlexArm, TJ Rear (bent)	2
FATJLF	Lower FlexArm, TJ Front	2
QDFT	Sway bar quick disconnects	1
SBSPT	Steering box skid plate	1

1. Put vehicle on level ground. Set parking brake.
2. Starting on the passenger side first, remove the front and rear lower control arms.

Note: It is important to remove the control arms from only the passenger side at this time. The driver's side control arms will be removed later.

3. Remove the lower control arm mounts from the vehicle. Grind the welds away and use a chisel to separate the bracket from the frame.



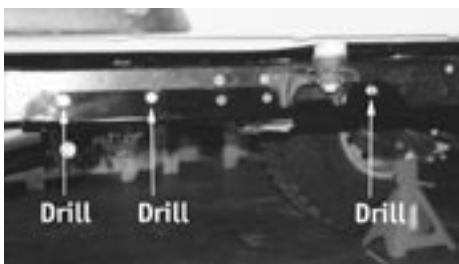
4. Buffing and painting the bracket area will improve appearance and minimizes rust.

Tera Manufacturing, Inc.
 5251 South Commerce Dr.
 Murray, Utah 84107
 Phone/801.288.2585
 Fax/801.288.2571
 www.teraflex.biz

5. Support the transmission and transfer case with a jack.
6. Remove the transfer-case skid plate or belly pan.
7. If the TJ is equipped with factory side steps, remove them.
8. Before securing the passenger's side control arm bracket to the frame, connect one new rear-lower control arm to the rear mount. Use the new 9/16" bolt, 9/16" lock washer, and flat washer supplied in the kit. It is necessary to tighten at this point.

Note: Because of exhaust clearance issues, it may not be possible to install the bolt once the bracket has been secured in place against the frame on the passenger's side.

9. Position the control arm bracket assembly to the underside of the frame rail. Temporarily attach the control arm bracket to the frame using three bolts from the cross member. Make sure that the bracket aligns properly with the holes in the side of the frame.
10. Drill three 5/16" holes into the frame using the first two holes at the front and the last hole at the rear of the bracket as guides. Secure the bracket using three 3/8" self-tapping bolts in these holes.



This photo of the driver's side bracket shows the locations for drilling the three 5/16" holes. The 3/8" self-tapping bolts will install in these positions to secure the bracket to the frame.

11. If the TJ was equipped with factory steps, use the two 8mm bolts from the steps to secure the bracket to the frame.

Note: If the steps are going to be used, it will be necessary to find longer 8mm bolts. Many people choose to leave the steps off.

12. Make sure all bolts are securely fastened.
13. Connect the rear lower control arm to the axle. Lengthen or shorten the control arm to adjust for proper pinion angle. Secure with the stock bolt.
14. Use stock bolts to install the front lower control arm (straight arm) with the female end towards the frame. The grease zerk faces up.

Note: With a TeraFlex four-inch suspension, the front control arms should be set at about 32.5" center to center. Adjust as necessary for the specific vehicle. Secure with stock bolts.

16. Begin installation on the driver's side by removing the lower control arms from the driver's side of the vehicle.
17. Grind control brackets from the vehicle and touch up as necessary.
18. Connect the driver's side control arm bracket to the underside of the frame. Make sure the bracket is properly aligned with the holes in the frame before securing. Secure with the three bolts that were used to connect the skid plate to the frame.
19. Drill three 5/16" holes into the frame using the first two holes at the front and the last hole at the rear of the bracket as guides. Secure the bracket using three 3/8" self-tapping bolts in these holes.
20. If the TJ was equipped with factory steps, use the two 8mm bolts from the steps to secure the bracket to the frame.

21. Connect the new rear lower control arm to the bracket using the new 9/16" bolt, 9/16" lock washer, and flat washer supplied in the kit.

Connect the rear lower control arm to the axle. Lengthen or shorten the control arm to adjust for proper pinion angle. Secure with the stock bolt.



This photo shows the front driver's side control arm following installation.

22. Make sure all bolts are securely fastened.
 24. Install front lower control arm (straight arm) with the female end towards the frame. Zerk face up.
- Note: With a TeraFlex four-inch suspension, the front control arms should be about 32.5" center to center. Adjust as necessary for the specific vehicle. Secure with stock bolts.*
25. Remove the three bolts from the underside of each control arm bracket.
- Note: The bracket will stay in position because it is attached to the frame by the 3/8" self-tapping bolts.*
25. Replace skid plate and secure with bolts. Tighten securely.
 26. Check to make sure all bolts are properly tightened.

Installation guide for TJ quick disconnects (QDFT)

TeraFlex sway bar quick disconnects include the items pictured. Part QDFT for vehicles with two to four inches of lift. Use part QDFT-S for vehicles with zero to two inches of lift. Part QDFT-S does not include brake line extensions. DO NOT use these disconnects with only one side connected.



Part One

Prior to starting the installation, please remove the stock sway bar links.

Step 1

After removing the sway bar links, identify the left and right quick disconnects. One way to tell is that the bolt head will point away from the vehicle in its final position.



Place the sleeve on the threaded bracket bolt and screw the quick disconnect assembly into the hole vacated by the previous bolt.

Step 2

Once the assembly has been inserted into place, please make sure that the grease zerk point downward away from the vehicle. Add the washer and bolt and secure.



Step 3

Using a 9/16" wrench tighten the bolt.



Part Two

Securing the stud to the lower mount bracket.



Step 1

Now, you will attach the sway bar stud to the lower mount bracket.



Step 2

Insert the stainless steel stud in the whole vacated by stock sway bar arm so that the threaded end of the stud points away from the vehicle.



Step 3

Use the pin for leverage when tightening the nut with a 3/4" wrench.



Step 4

Now you can attach the sway bar arm to the stud mount.



Step 5

Slide the polyurethane bushing onto the lower stainless steel stud. The use of a lubricant such as WD-40 will make this much easier.

Step 6

Place the washer on the side opposite the bolt.



Step 7

Secure the arm in place using the washer and pin.

Part Three

Follow these steps to secure the sway bar out of the way for off-roading.

Step 1

Use the connected sway bar arm to determine the proper location for the securing stud. Position the arm out of the way and mark the center of the bushing where it rests against the frame. This is where we will attach the securing stud.



Step 2

In order to install the stainless stud for securing the sway bar and arm when disconnected, you will need a hand drill. We suggest drilling a pilot hole with a smaller drill bit. Using a 5/16" bit, drill through the pilot hole.



Step 3

Use a tap wrench and a 3/8" tap to thread the hole for the stainless steel securing stud. (The 3/8" self-tapping bolt could also be used to thread hole.) Extra care should be used to make sure the tap is perpendicular to the frame.



Step 4

With a pin in the stud, twist the securing stud into place. A drop of Loc-Tite on the stud's threads will help keep it secure.



Step 5

Once the securing stud is ready, you can attach the disconnected sway bar arm out of the way against the frame.

Instructions for Brake Line Extensions

1. Remove Torx bolt holding from brake line to frame.
2. Line up bracket with holes in frame so the bracket extends down.
3. With the bracket in place, use Torx bolt to secure the bracket to frame.
4. Pull brake line assembly down until it lines up with lower holes in the new bracket.
5. Using 1/4" bolt and nut supplied, secure brake line to the bracket.

Note:

Remember to grease your sway bar quick disconnects whenever you change your oil. We recommend greasing them at least every 3,000 miles. It is also a good idea to grease after going through water and when the quick disconnects become difficult to move. Lubricants like WD-40 on the stainless studs will make moving the quick disconnect arms much easier.

Installation guide for TJ Steering Box Skid Plate (SBSPT)

Installation

1. Remove the driver side lower bumper bolt.
2. Hold skid plate in place, placing the largest of the three holes in the skid plate over the hole from the bumper bolt.
3. With the skid plate in place, replace the bumper bolt.
4. Use flat washers to correct the spacing of skid plate when using stock bumper.



5. Use the existing hole in the frame to line up the rear skid plate bolt. Put the nut inside the frame.
6. Put the spacer in place and install bolt.
7. With the skid plate in place, locate the remaining hole in the ear of the skid plate. Using the hole as a guide, use a center punch to mark the location you will be drilling.
8. Use a 5/16" drill bit to drill the frame at the location you just marked.
9. Screw the self-tapping bolt into the hole you just made and tighten.