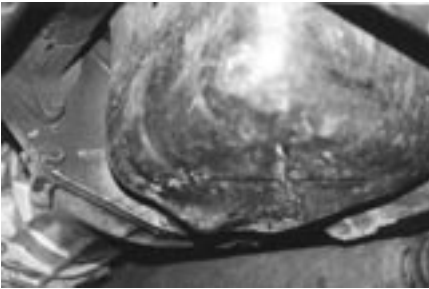




## ***TJ Oil Pan Skid Plate (OPSPT)***

**Note:**

***The TJ oil pan skit plate is designed for 4.0L six cylinder TJs only.***



Remove the three bolts from lower edge of the fly wheel inspection plate. One bolt is located on each end and another is located in the center. Save the bolts.



The skid plate attaches to the forward facing side of the fly-wheel inspection plate so it protects the oil pan and faces to the front of the vehicle.



Using the original bolts, secure the skid plate so that the bent lip of the skid plate is located at the front of the oil pan.

***Tera Manufacturing, Inc., 5251 South Commerce Dr., Murray, Utah 84107  
Phone/801.288.2585 Fax/801.288.2571 www.teraflex.biz***

Revised 12 Jan 00